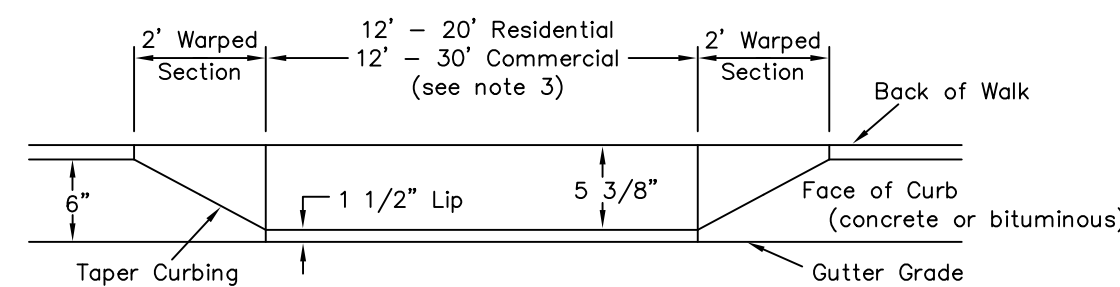
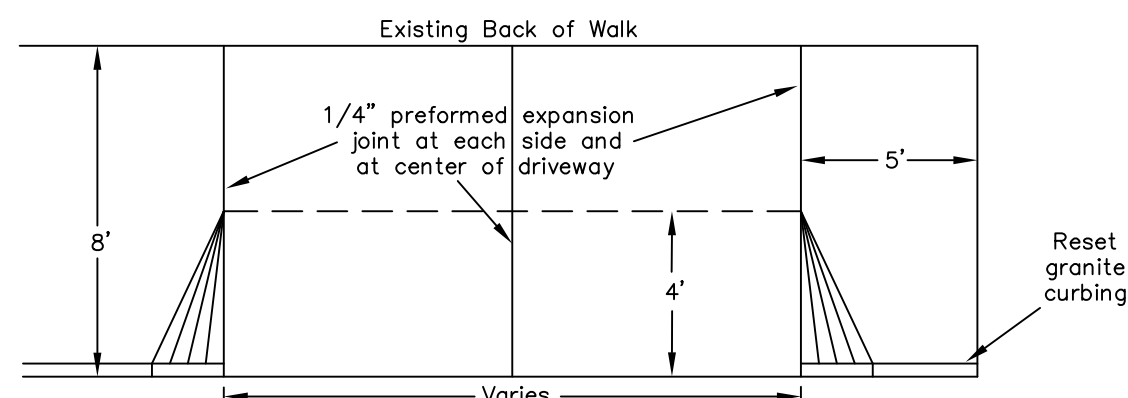


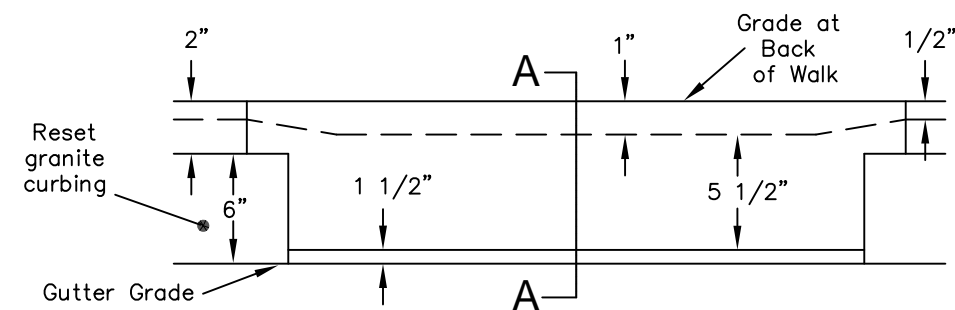
DRIVEWAYS



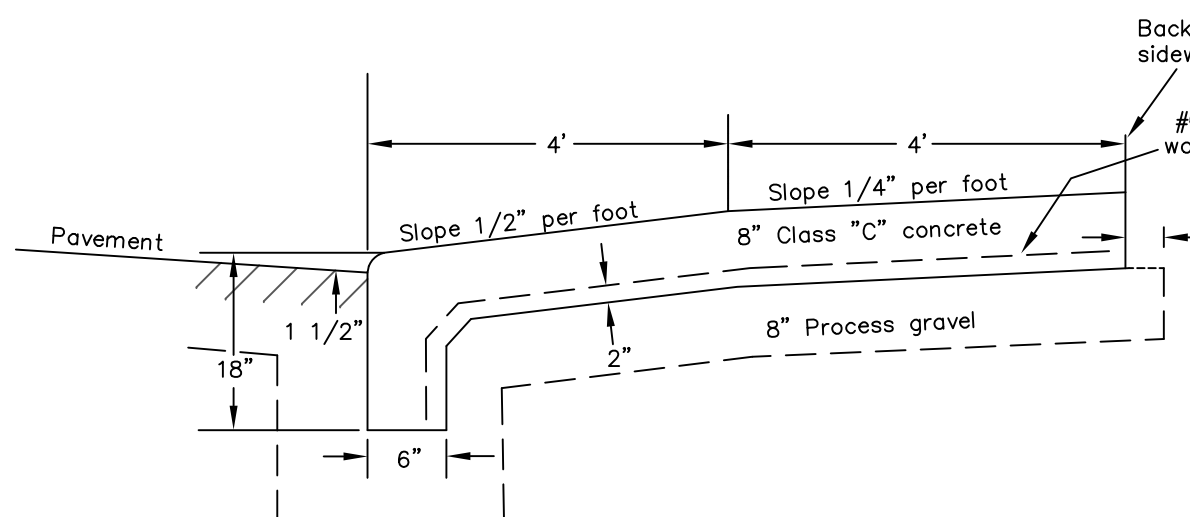
Profile
Typical Driveway



Plan



Profile

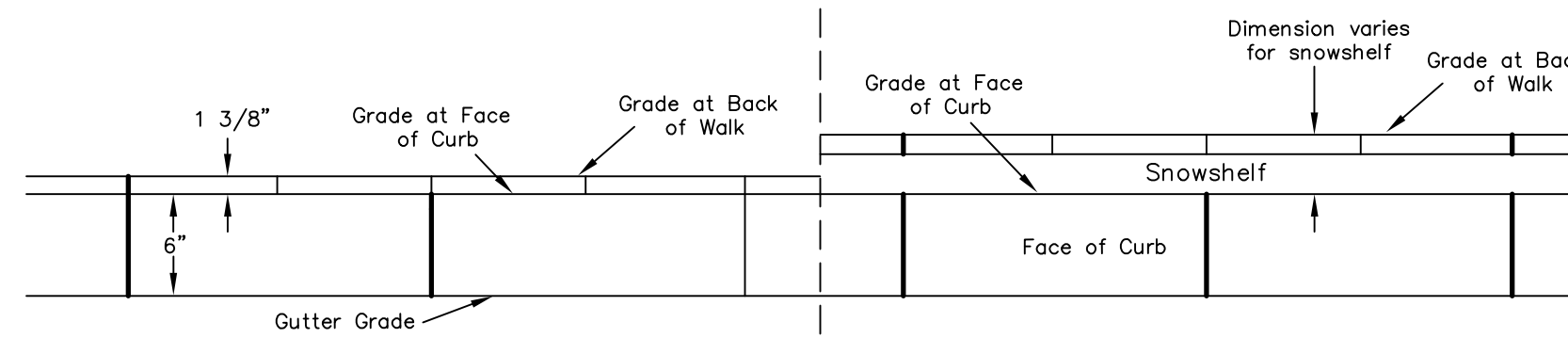


Residential Concrete Apron Replacement
(N.T.S.)

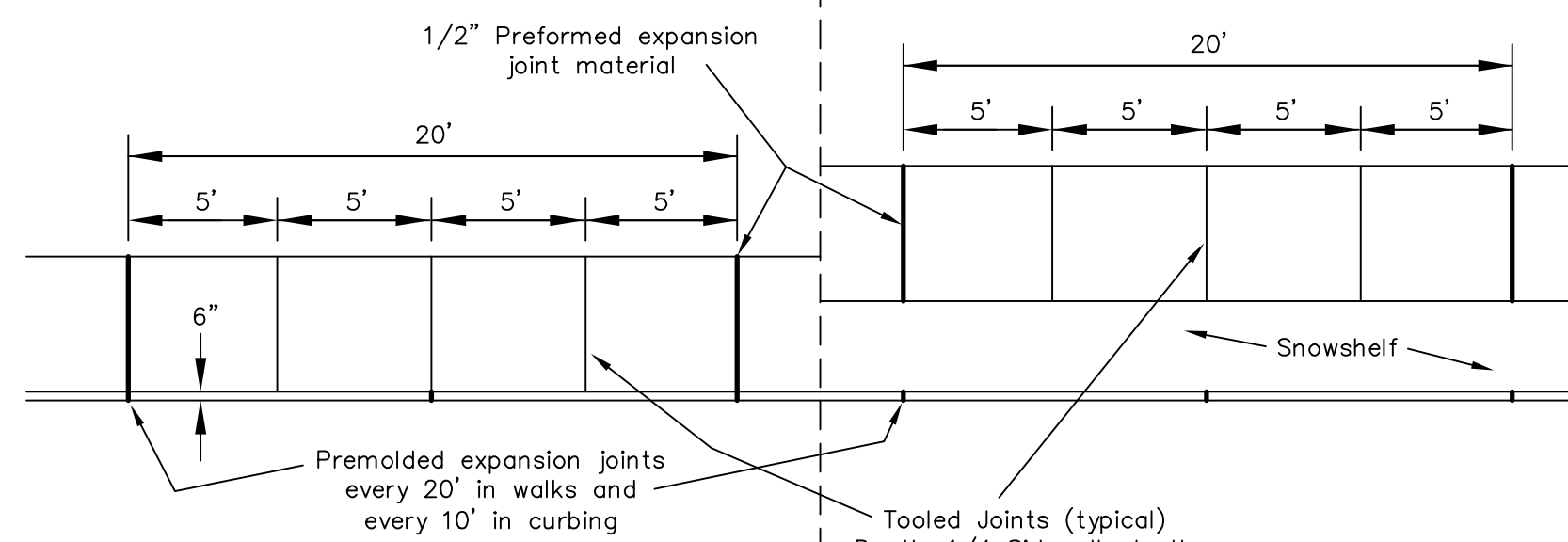
NOTES:

1. Width to accommodate mechanical compaction as approved by Engineering Department.
2. Buffer strips to be a minimum of 5' wide for new trees. Species to be approved by City Planner.
3. Driveway widths will be based upon field conditions and Planning Department approval. Maximum width will be 20' for residential or 30' for commercial property unless otherwise approved by the Planning Department.
4. Entire sidewalk sections may need to be lowered to achieve slope or as instructed by Engineering Department.
5. Bond breaker must be placed between concrete and all metal fixtures within sidewalk area.
6. Refer to Connecticut DOT sidewalk guidesheets for accessible ramp details.

SIDEWALK AND CURBING



Profile

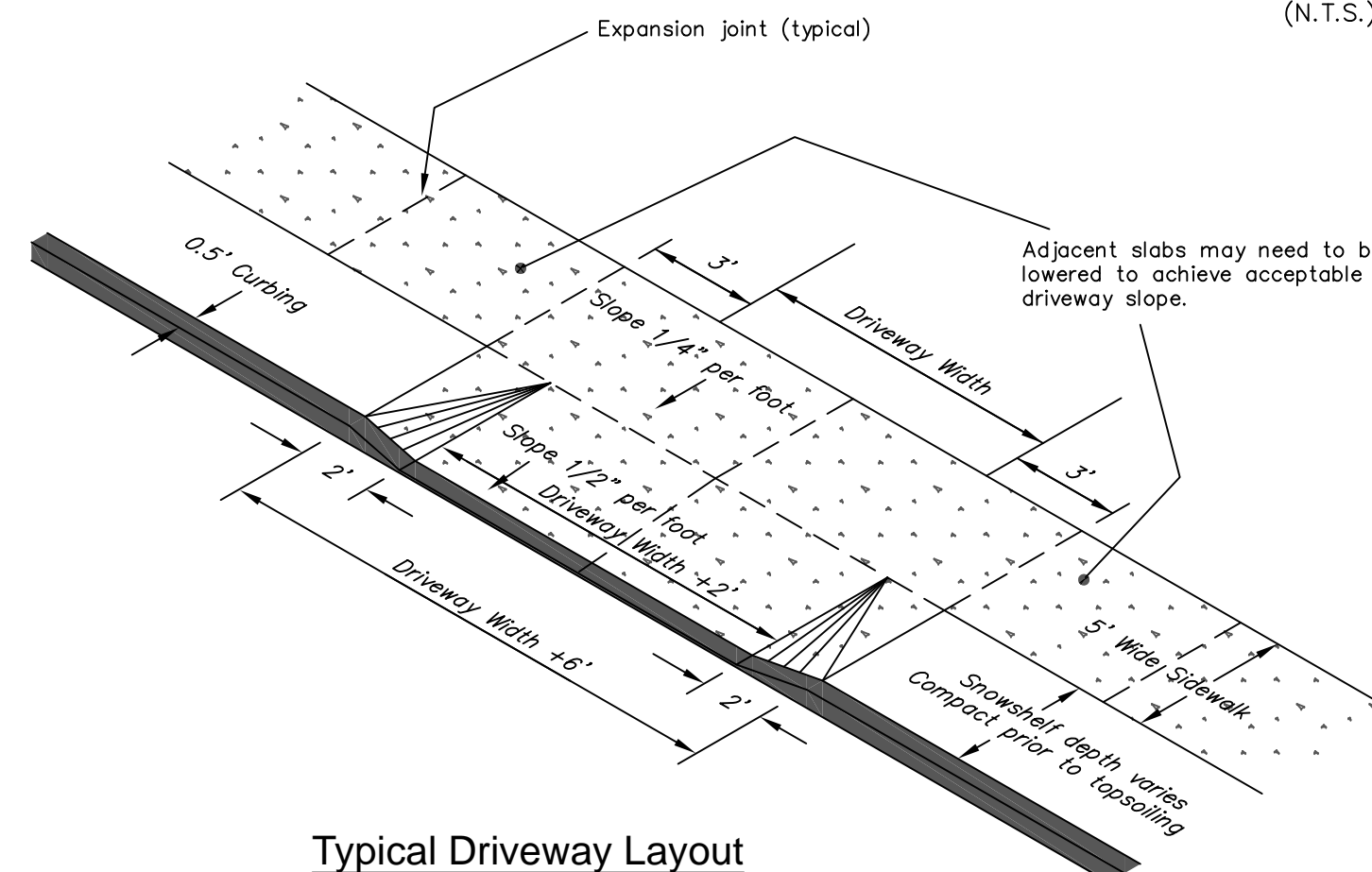


Monolithic Sidewalk Plan

CONCRETE SHALL BE CLASS 'C' AND 3300 PSI OR BETTER (N.T.S.)

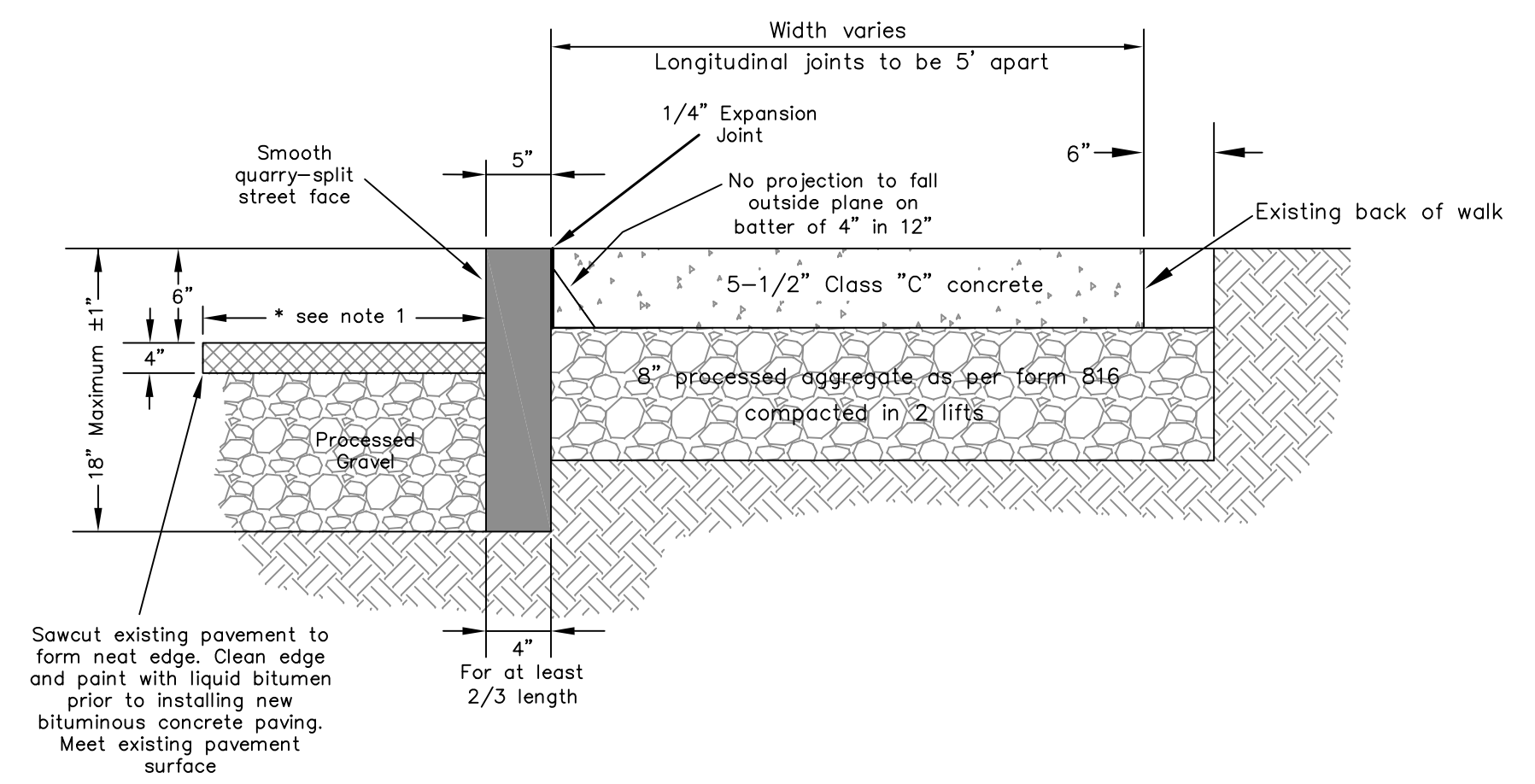
Concrete Curbing and Walk

(N.T.S.)



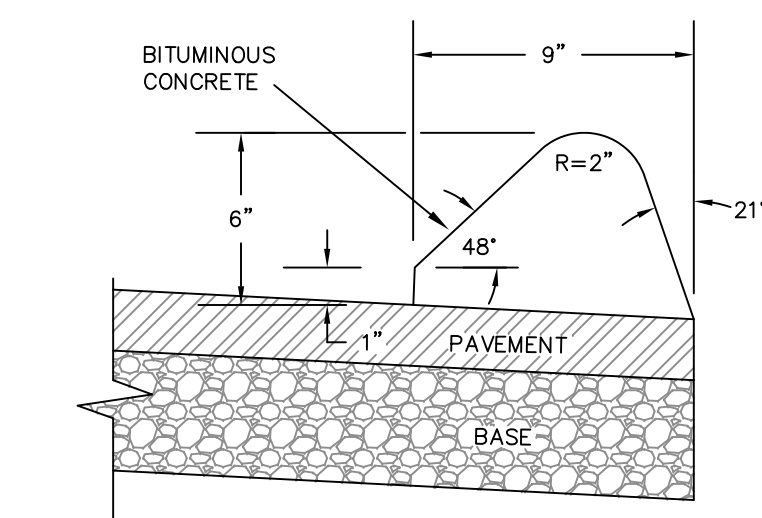
Typical Driveway Layout

CURBING

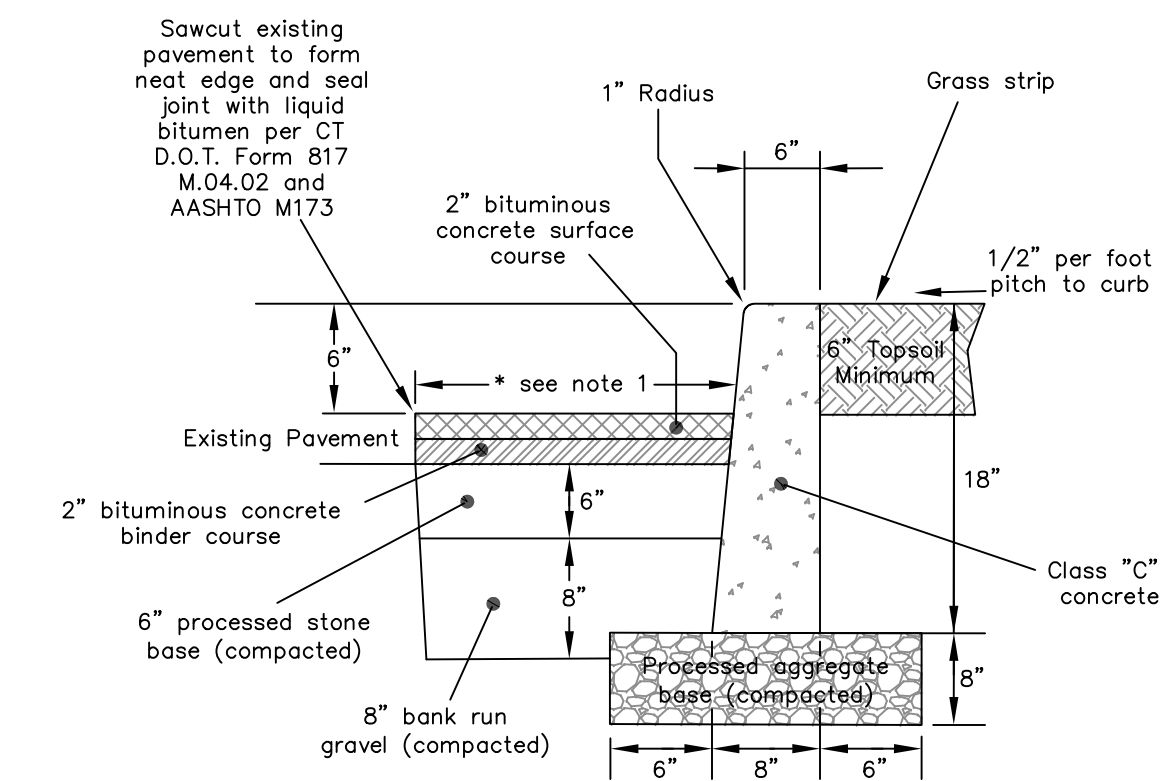


Granite Curbing

(N.T.S.)



Bituminous Concrete Lip Curbing
Machine Formed

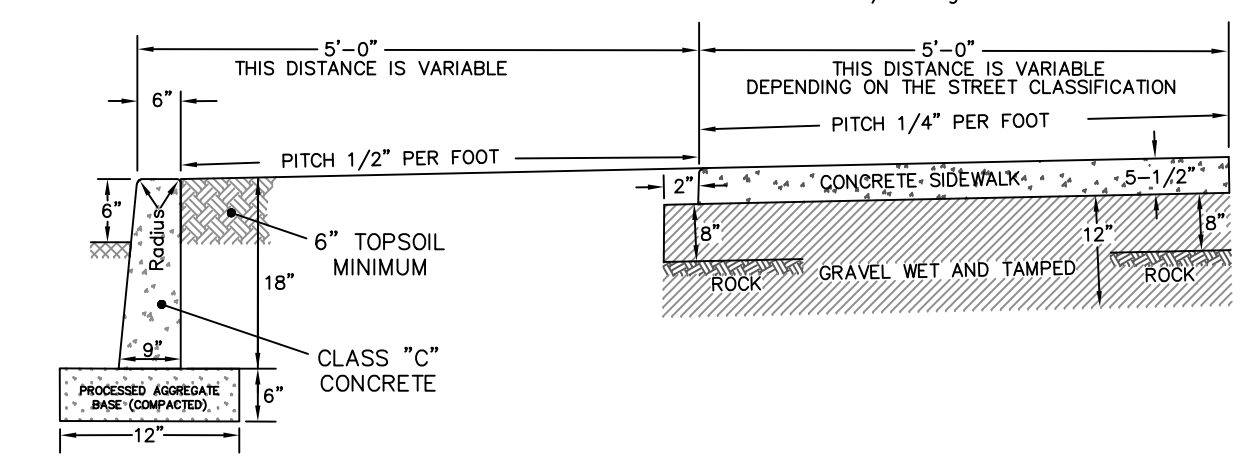


Poured in Place Concrete Curb

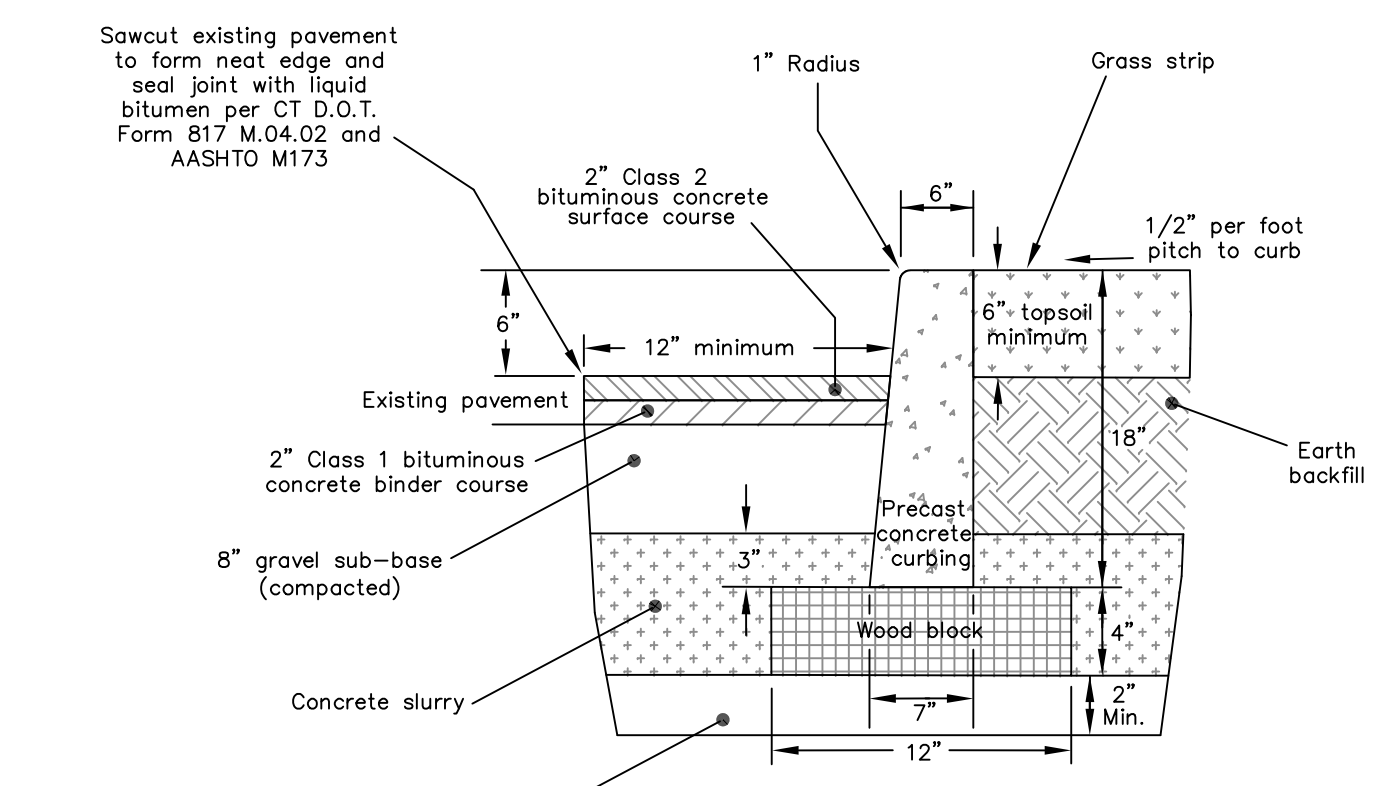
CURBING
CONCRETE CURBING WILL BE INSTALLED IN ACCORDANCE WITH STATE OF CONNECTICUT DEPARTMENT OF TRANSPORTATION STANDARD SPECIFICATIONS FORM 817, SECTION 8.11 EXCLUDING PARAGRAPHS 8.11.04 AND 8.11.05 FOR MEASUREMENT AND PAYMENT.

CONCRETE WALKS
CONCRETE WALKS WILL BE INSTALLED IN ACCORDANCE WITH STATE OF CONNECTICUT DEPARTMENT OF TRANSPORTATION STANDARD SPECIFICATIONS FORM 817, SECTION 9.21 EXCLUDING PARAGRAPHS 9.21.04 AND 9.21.05 FOR MEASUREMENT AND PAYMENT.

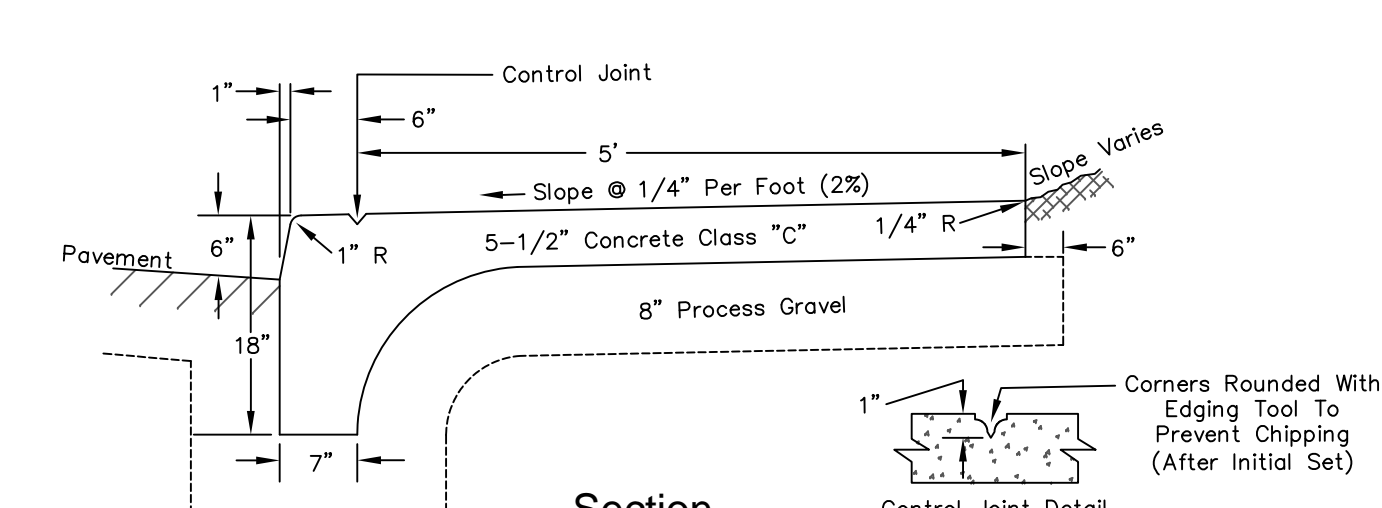
NOTE: Sidewalks must be formed with 2"x6" lumber or 5-1/2" high metal or wood forms



Typical Curb & Sidewalk



Precast Concrete Curb Detail
Not To Scale

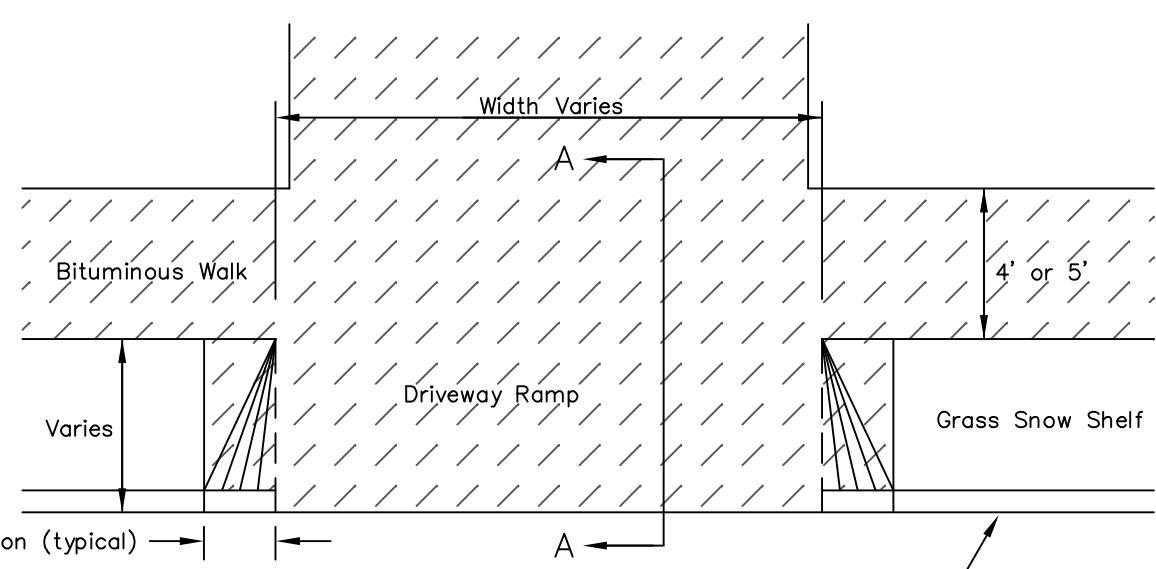


Typical Monolithic Curb & Sidewalk

NOTE: Sidewalks must be formed with 2"x6" lumber or 5-1/2" high metal or wood forms

Section A-A

Section B-B

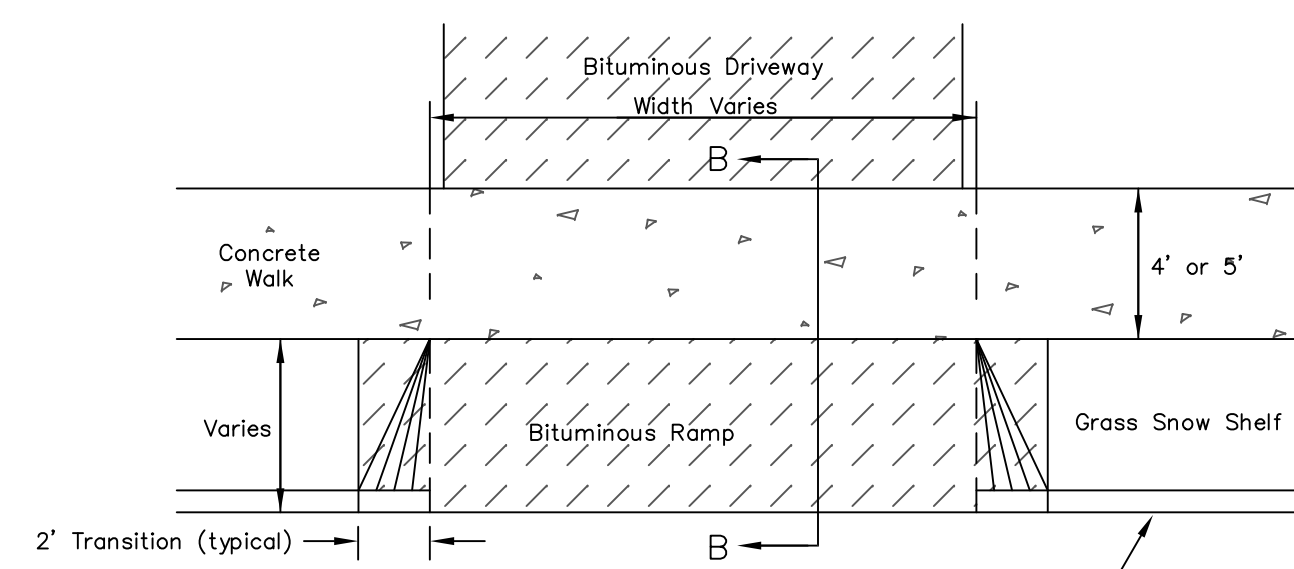


Plan

Residential Bituminous Driveway and Sidewalk

(N.T.S.)

NOTE: Only allowed in outer district and with approval of Planning Commission



Plan

Residential Concrete Sidewalk with Bituminous Apron

(N.T.S.)

NOTE: Only allowed upon approval of the City of Meriden Engineering Department

Detail Sheet		DATE:	2/20/19
Sidewalk and Driveway Standards		DESIGN:	BBD
DEPARTMENT OF PUBLIC WORKS		DRAWN:	BBD
Engineering Division		SCALE:	Not to Scale
City Hall		Room 19	DWG.
Meriden, Connecticut		SHEET	1
		OF	1